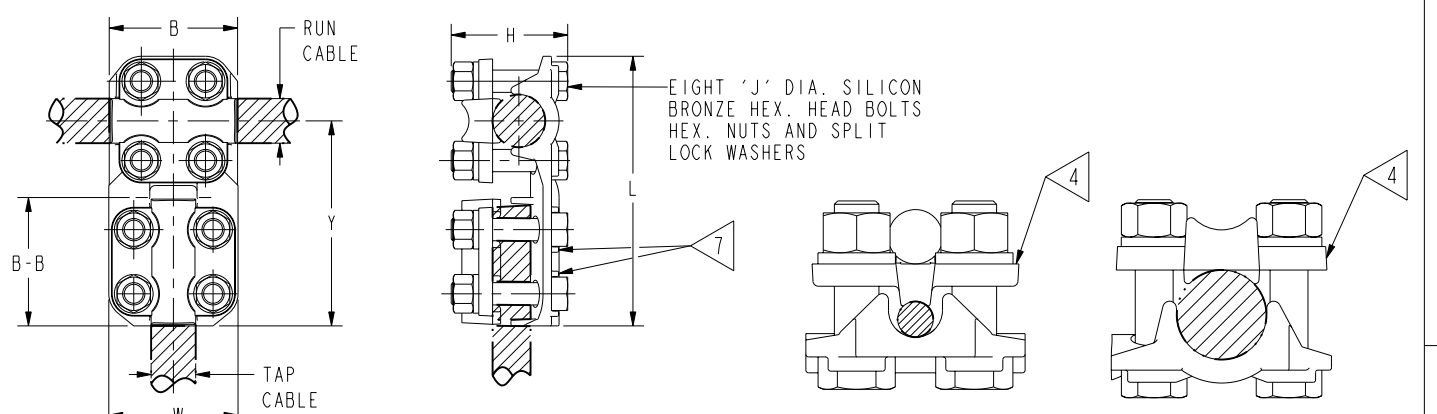


CATALOG NUMBER	COMMERCIAL COPPER CABLE RANGE						METRIC COPPER CABLE RANGE					
	COMPLETE RUN CABLE RANGE	SMALL RUN GROOVE	LARGE RUN GROOVE	COMPLETE TAP CABLE RANGE	SMALL TAP GROOVE	LARGE TAP GROOVE	COMPLETE RUN CABLE RANGE	SMALL RUN GROOVE	LARGE RUN GROOVE	COMPLETE TAP CABLE RANGE	SMALL TAP GROOVE	LARGE TAP GROOVE
NSNT2929	#6SOL (.162 DIA) TO 250kcml (.575 DIA)	#6SOL (.162 DIA) TO 1/0STR (.372 DIA)	2/0STR (.420 DIA) TO 250kcml (.575 DIA)	#6SOL (.162 DIA) TO 250kcml (.575 DIA)	6SOL (.162 DIA) TO 1/0STR (.372 DIA)	2/0STR (.420 DIA) TO 250kcml (.575 DIA)	10mm ² (4.12mm DIA) TO 120mm ² (14.40mm DIA)	10mm ² (4.12mm DIA) TO 50mm ² (9.27mm DIA)	70mm ² (10.92mm DIA) TO 120mm ² (14.40mm DIA)	10mm ² (4.12mm DIA) TO 120mm ² (14.40mm DIA)	10mm ² (4.12mm DIA) TO 50mm ² (9.27mm DIA)	70mm ² (10.92mm DIA) TO 120mm ² (14.40mm DIA)
NHNT2929												
NSNT3429	1/0SOL (.325 DIA) TO 500kcml (.813 DIA)	1/0SOL (.325 DIA) TO 4/0STR (.529 DIA)	250kcml (.575 DIA) TO 500kcml (.813 DIA)	1/0SOL (.325 DIA) TO 500kcml (.813 DIA)	1/0SOL (.325 DIA) TO 4/0STR (.529 DIA)	250kcml (.575 DIA) TO 500kcml (.813 DIA)	50mm ² (9.27mm DIA) TO 240mm ² (20.35mm DIA)	50mm ² (9.27mm DIA) TO 95mm ² (12.80mm DIA)	120mm ² (14.40mm DIA) TO 240mm ² (20.35mm DIA)	50mm ² (9.27mm DIA) TO 240mm ² (20.35mm DIA)	50mm ² (9.27mm DIA) TO 95mm ² (12.80mm DIA)	120mm ² (14.40mm DIA) TO 240mm ² (20.35mm DIA)
NHNT3429												
NSNT3434												
NHNT3434												
NSNT4429												
NHNT4429												
NHNT4434	4/0STR (.529 DIA) TO 1000kcml (1.152 DIA)	4/0STR (.529 DIA) TO 750kcml (.998 DIA)	750kcml (.998 DIA) TO 1000kcml (1.152 DIA)	1/0SOL (.325 DIA) TO 500kcml (.813 DIA) 2/0STR (.420 DIA) TO 800kcml (1.031 DIA) 4/0STR (.529 DIA) TO 1000kcml (1.152 DIA)	1/0SOL (.325 DIA) TO 4/0STR (.529 DIA) 2/0STR (.420 DIA) TO 500kcml (.813 DIA) 4/0STR (.529 DIA) TO 750kcml (.998 DIA)	250kcml (.575 DIA) TO 500kcml (.813 DIA) 500kcml (.813 DIA) TO 800kcml (1.031 DIA) 750kcml (.998 DIA) TO 1000kcml (1.152 DIA)	95mm ² (12.80mm DIA) TO 500mm ² (29.30mm DIA)	95mm ² (12.80mm DIA) TO 400mm ² (26.10mm DIA)	400mm ² (26.10mm DIA) TO 500mm ² (29.30mm DIA)	50mm ² (9.27mm DIA) TO 240mm ² (20.35mm DIA) 70mm ² (10.92mm DIA) TO 400mm ² (26.10mm DIA) 95mm ² (12.80mm DIA) TO 500mm ² (29.30mm DIA)	50mm ² (9.27mm DIA) TO 95mm ² (12.80mm DIA) 70mm ² (10.92mm DIA) TO 400mm ² (26.10mm DIA) 95mm ² (12.80mm DIA) TO 400mm ² (26.10mm DIA)	120mm ² (14.40mm DIA) TO 240mm ² (20.35mm DIA) 240mm ² (20.35mm DIA) TO 400mm ² (26.10mm DIA) 400mm ² (26.10mm DIA) TO 500mm ² (29.30mm DIA)
NHNT4440												
NHNT4444												
NHNT4834												
NHNT4840												
NHNT4844	500kcml (.813 DIA) TO 2000kcml (1.632 DIA)	500kcml (.813 DIA) TO 1500kcml (1.412 DIA)	1500kcml (1.412 DIA) TO 2000kcml (1.632 DIA)	4/0STR (.529 DIA) TO 1000kcml (1.152 DIA) 1000kcml (1.152 DIA) TO 1500kcml (1.412 DIA)	4/0STR (.529 DIA) TO 750kcml (.998 DIA) 750kcml (.998 DIA) TO 1000kcml (1.152 DIA)	750kcml (.998 DIA) TO 1000kcml (1.152 DIA) 1000kcml (1.152 DIA) TO 1500kcml (1.412 DIA)	240mm ² (20.35mm DIA) TO 1000mm ² (41.10mm DIA)	240mm ² (20.35mm DIA) TO 800mm ² (36.90mm DIA)	800mm ² (36.90mm DIA) TO 1000mm ² (41.10mm DIA)	95mm ² (12.80mm DIA) TO 500mm ² (29.30mm DIA) 500mm ² (29.30mm DIA) TO 800mm ² (36.90mm DIA)	95mm ² (12.80mm DIA) TO 400mm ² (26.10mm DIA)	400mm ² (26.10mm DIA) TO 500mm ² (29.30mm DIA) 500mm ² (29.30mm DIA) TO 800mm ² (36.90mm DIA)
NHNT4846												
NHNT4848												

CATALOG NUMBER	B	B-B	H	J DIA.	L	W	Y
NSNT2929	2.38 [61]	2.38 [61]	1.75 [44]	3/8 - 16	4.60 [117]	1.96 [50]	3.62 [92]
NHNT2929	2.62 [67]	2.62 [67]	2.07 [53]	1/2 - 13	5.32 [135]	2.44 [62]	4.10 [104]
NSNT3429	2.38 [61]	2.38 [61]	2.00 [51]	3/8 - 16	4.84 [123]	1.96 [50]	3.74 [95]
NHNT3429	2.62 [67]	2.62 [67]	2.32 [59]	1/2 - 13	5.44 [138]	2.44 [62]	4.16 [106]
NSNT3434	2.38 [61]	2.38 [61]	2.00 [51]	3/8 - 16	4.84 [123]	2.20 [56]	3.74 [95]
NHNT3434	2.62 [67]	2.62 [67]	2.32 [59]	1/2 - 13	5.38 [137]	2.56 [65]	4.10 [104]
NSNT4429	2.88 [73]	2.38 [61]	2.57 [65]	3/8 - 16	5.07 [129]	1.96 [50]	4.09 [104]
NHNT4429						2.44 [62]	
NHNT4434	2.88 [73]	2.62 [67]	2.57 [65]	1/2 - 13	5.78 [147]	2.56 [65]	4.33 [110]
NHNT4440					2.78 [71]		
NHNT4444		2.88 [73]			6.03 [153]	2.90 [74]	4.58 [116]
NHNT4834	3.25 [83]	2.62 [67]	3.07 [78]	1/2 - 13	6.26 [159]	2.56 [65]	4.57 [116]
NHNT4840					2.78 [71]		
NHNT4844					2.88 [73]		
NHNT4846					3.06 [78]		
NHNT4848		3.25 [83]			6.94 [176]	3.38 [86]	5.25 [133]



NOTES:

- MATERIAL: CAST COPPER ALLOY.
- ACCOMMODATES: RUN: SEE TABLE TAP: SEE TABLE
- DIMENSIONS IN BRACKET [] DENOTES METRIC UNITS [SI UNITS] AND ARE ROUNDED TO THE NEAREST WHOLE NUMBER UNLESS OTHERWISE SPECIFIED THESE UNITS SHALL BE USED FOR REFERENCE ONLY.
- COMPLETE CABLE RANGE MAY BE ACCOMMODATED BY REVERSING CAP.

- INSTALLATION METHOD: ALL CONTACT SURFACES OF THE CONNECTORS SHALL BE AGGRESSIVELY BRUSHED, A MINIMUM OF 2 BRUSHES ON EACH SURFACE, USING A STAINLESS STEEL WIRE BRUSH FILLED WITH PENETROX™ A13. REMOVE GREASE FROM SURFACE USING A CLEAN AND DRY CLOTH (NO SOLVENTS). IMMEDIATELY APPLY A THIN LAYER OF PENTEROX™ A13 ON ALL CONTACT SURFACES BEFORE ASSEMBLY.
- ALL LETTERING IS RECESSED.
- HEX BOLTS CAPTURED TO PREVENT TURNING DURING INSTALLATION.
- PLATING OPTIONS: CONTACT BURNDY FOR OTHER AVAILABLE PLATING OPTIONS. ADD SUFFIX TN FOR TIN PLATED BODY AND CAP ONLY. ADD SUFFIX W FOR TIN PLATED BODY AND CAP WITH TIN PLATED HARDWARE. ADD SUFFIX SV FOR SILVER PLATING.

TO ORDER BURNDY® PRODUCTS CALL
UNITED STATES
1-800-346-4175 (LONDONDERRY, NH)
CANADA:
1-800-361-6975 (QUEBEC)
1-800-387-6487 (ALL OTHER PROVINCES)
FOR PRODUCT INFO: <http://www.burndy.com>

ITEM NO: ---
CAT. NO: NHNT--, NSNT-- (TABLE)
DRAWN BY: H.C. 9-18-83
CHECKER: CAR 9-26-83
DSN APPVL: R LAVOIE 10/07/13
MFG APPVL: ---
QA APPVL: J HILLMAN 10/07/13
MKT APPVL: B MICHAUD 10/11/13

"T" - CONNECTOR
DRAWING NO: SE079868-01
REV: B
SHEET 1 OF 1

SCALE: 1:1

PROJ #:
DOC TYPE: Sales
REL LEVEL: Released

SUPERSEDES: SD079868-1

REFERENCE: FE086318